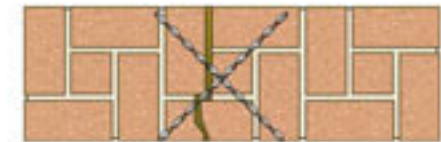
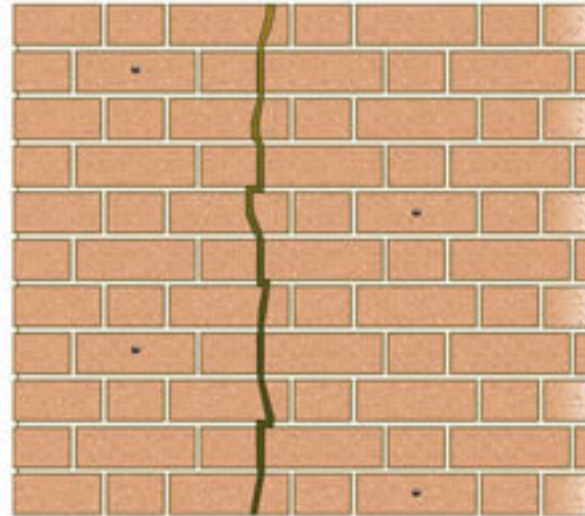


Cross Stitching a Cracked Solid Wall using Thor Grout Ties

TCS
05

Method Statement

1. Mark fixing positions on the outer face of the wall.
2. Drill 16mm clearance holes from the outer face to the required depth.
3. Clean out all dust from the holes and thoroughly flush with water. Use Thor Primer to seal the faces of the hole where substrate is very porous or water can't be used.
4. Attach the appropriate length of Grout Tie pinning nozzle to the grout gun.
5. Mix the Thor WHO Grout constituents together, as directed, in the bucket provided using a powered mixing paddle. Additional liquid should not be added.
6. Load the grout into the grout gun and pump grout to fill the nozzle.
7. Screw the Grout Tie into the pinning nozzle and ensure it is fully encapsulated in grout.
8. Insert the nozzle to the full depth of the hole and pump the grout gun to expel the grout and Grout Tie. Finish the grout back from face of brickwork to allow application of a colour matched mortar.
9. **Note.** Re-pointing can be commenced when grout has begun to set.
Note. Thor WHO Grout has an accelerated gelling time. Should the grout become too stiff to inject, empty the contents of the grout gun back into the mixing bucket and re-mix using the powered mixing paddle without adding additional liquid. Reload the injection gun and proceed as before.



SPECIFICATION NOTES

This method should only be used to repair cosmetic cracks in thick solid walls that have an applied finish which is difficult to patch repair (e.g. pebble dash)

- A. Grout Ties are to be installed perpendicular to the direction of the crack plane (i.e. horizontally for vertical cracks and vertically for horizontal cracks).
- B. Grout Ties are to start a minimum of 225mm from the crack.
- C. Depth of the clearance hole to be Grout Tie length +25mm.
- D. Angle of installation to ensure Grout Ties pass through the crack within centre third of wall.
- E. Grout Ties are to be installed from alternate sides of the crack at 225mm spacings along the length of the crack.
- F. **Climatic Conditions.** In hot conditions Thor WHO 60 grout should be stored and mixed in the shade to maximize the working life of the mixed product. As Thor WHO 60 grout is a cementitious product it should not be used when the temperature is +4°C and falling

RECOMMENDED TOOLING

- A. 16mm dia. drill bit of appropriate length.
- B. 2.5kg SDS hammer drill
- C. Thor Grout gun and injection nozzle.
- D. Grout Tie pinning nozzle of appropriate length.

General Notes

These notes are for general use only. Should these notes not apply to your specific project, please consult the Thor Helical Remedial Technical Support Team on 0870 6006164. Thor Helical Remedial are able to offer a full project design service by either our in house design team or our National network of Approved installers. In most instances this service is provided free of charge. Projects completed by our network of approved installers offer the benefit of a fully underwritten insurance backed guarantee.